



OPERA IN SCHOOLS

SENSORY FRIENDLY

WEDNESDAY, MAY 8 - 12PM

VALERO SENSORY FRIENDLY PERFORMANCES

Sensory Friendly performances address specific aspects of theatre productions, taking into account all five senses and the factors that may make live performances overwhelming. We strive to make the audience experience more welcoming and comfortable to patrons with sensory sensitivities or other needs.

OPERA in Schools: Sensory Friendly features artists from OPERA San Antonio who will perform scenes from OSA's season including Humperdinck's Hansel and Gretel and Gilbert & Sullivan's The Pirates of Penzance.

This immersive, interactive program is a great introduction to opera! Learn the definition of opera and how it functions as a collaborative art form; types of singing ensembles and voice types; elements of storytelling, and how composers use music to portray characters within an opera.



HEARST *foundations*

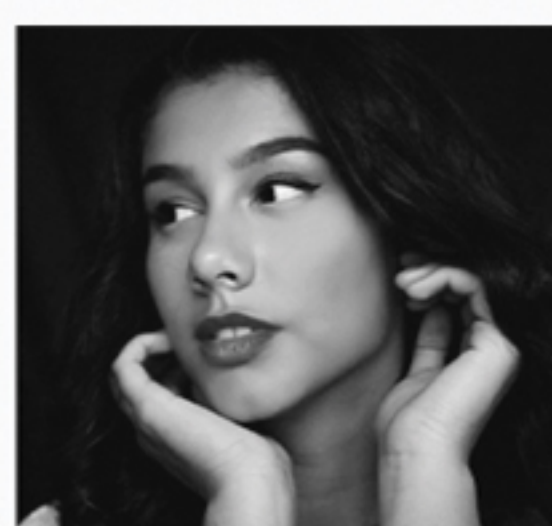


GENERATION
NEXT
EDUCATION INITIATIVE

OPERA San Antonio *is committed to preserving and sharing opera as an art form that is relevant, inspirational, and accessible to all ages and backgrounds. OPERA San Antonio believes the community needs access to the major performing arts.*



Madeline Elizondo, OPERA San Antonio's Director of Education & Outreach, will be our narrator and Master of Ceremonies



Annisha Mackenzie, Soprano: Characters of Gretel in Hansel & Gretel and Mabel in The Pirates of Penzance



Tiffany Collazo, Mezzo-soprano: Characters of Hansel in Hansel & Gretel and Ruth in The Pirates of Penzance



Brandon Morales, Bass: The Pirate King in The Pirates of Penzance



William Chapman, Tenor: Frederic in The Pirates of Penzance

Today's performance will include:

Opera = all art forms working together

Singers = Athletes

Music is Universal (Listen for emotions) Voice types

Types of Ensembles

Scenes from Humperdinck's Hansel and Gretel

Scenes from Gilbert & Sullivan's

The Pirates of Penzance